



HUMAC2009 Software Installation Instructions for Windows XP and Vista

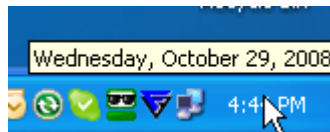
1. Program Requirements	1
2. Before You Begin.....	1
3. Installing the HUMAC Program	1
4. Importing Data from a Previous HUMAC Program.....	2
5. Installing the HUMAC USB Drivers – NORM & 6000 System.....	3
6. Installing the HUMAC COMMUSB Drivers – HUMAC360 and Weight Stack	5

1. Program Requirements

- 1.1. Available USB 1.1 or 2.0 port for the HUMAC NORM, 6000 and 360 interface.
- 1.2. Available serial port (COM1 or COM2) for the HUMAC CYBEX II, 300, TEF, TR, and Lift Task interface.
- 1.3. CD-ROM drive to install the software.
- 1.4. Windows XP Home, XP Pro, Vista Home, or Vista Business. **Note:** *The HUMAC is not compatible with 64-bit versions of Windows XP or Vista.*

2. Before You Begin

- 2.1. The HUMAC2009 software includes a licensing option which allows you to run a fully-functional trial version of the software for up to 45 days before the license is required. Before installing the software, double-click the time in the right side of the Windows task bar and confirm the date and time are set correctly. Changing the date/time during the trial period will cause the trial to end.



- 2.2. After installing the HUMAC program, do not start the HUMAC program until the computer is delivered to the customer. Starting the HUMAC program will start the trial period running.

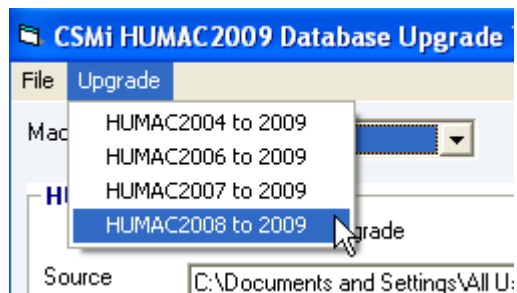
3. Installing the HUMAC Program

- 3.1. **Note:** *If you are installing the software on a NORM, 6000 or SmartLift, leave the HUMAC USB cable unplugged from the computer.*
- 3.2. Vista
 - 3.2.1. Place the HUMAC CD-ROM in your computer and remove any floppy disks. The setup program should begin running.
 - 3.2.2. Click the **Cancel** button to stop the installation.
 - 3.2.3. From the Windows Task Bar, select **Start, Computer.**
 - 3.2.4. Right-click the **CD Drive** icon and click **Explore.**
 - 3.2.5. Right-click the **SETUP** icon and click **Run as Administrator.**
- 3.3. WindowsXP

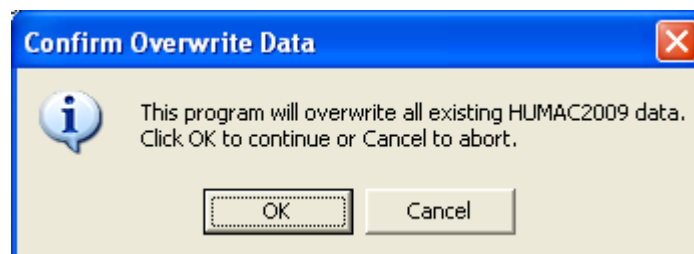
- 3.3.1. Place the HUMAC CD-ROM in your computer and remove any floppy disks. The setup program should begin running. If the program does not start.
 - 3.3.1.1. From the Windows Desktop, select **Start, Settings, Control Panel**.
 - 3.3.1.2. Double-click the **Add/Remove programs** icon.
 - 3.3.1.3. Click the **Install** button.
 - 3.3.1.4. Click the **Next>** button to search for the HUMAC installation program.
 - 3.3.1.5. The command line will show **d:\setup.exe** where d is your CD-ROM drive.
 - 3.3.1.6. Click the **Finish** button to start the installation.
- 3.4. We suggest you accept the default installation parameters at each screen.
- 3.5. Complete the setup program.

4. Importing Data from a Previous HUMAC Program

- 4.1. **Note:** *If you were running the HUMAC2009 and are loading an updated HUMAC2009 program the installation procedure is completed.*
- 4.2. Start and exit the HUMAC2009 Program one time to setup the default 2009 files.
- 4.3. From the **Windows Task Bar**, select, **Start, All Programs, HUMAC2009, Utilities, Upgrade Database to 2009**.
- 4.4. From the Database Upgrade program, select **Upgrade, HUMAC200? to 2009** for the version you are upgrading from. The HUMAC will fill-in the Machine you are connected to and the Database Source and Destination file locations.



- 4.5. Click the **Start** button.
- 4.6. The HUMAC will ask you to confirm that any existing 2009 data will be over-written. Click the **OK** button to continue. **Note:** *A copy of your original data will be imported into 2009. All previous HUMAC data will remain on the computer.*



- 4.7. The Upgrade program will convert your data to the new HUMAC2009 format. This may take a long time based on the amount of data in your database. When the upgrade process is complete, the HUMAC will display the completed dialog box. Click the **OK** button to continue.



4.8. From the **File** menu, select **Exit** to exit the Upgrade Program.

5. Installing the HUMAC USB Drivers – NORM & 6000 System

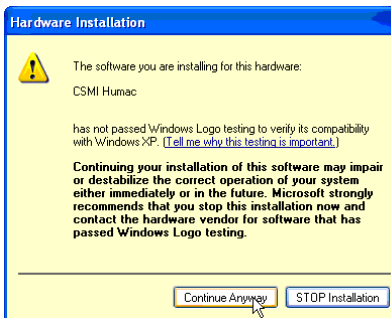
5.1. **Note:** *If you were running the HUMAC Program and are upgrading to the HUMAC2009 or are installing the software for a CYBEX II, 300, TEF, TR, or Lift Task, you do not need to perform these steps.*

5.2. With the CYBEX and PC turned on, plug the HUMAC USB cable into the PC.

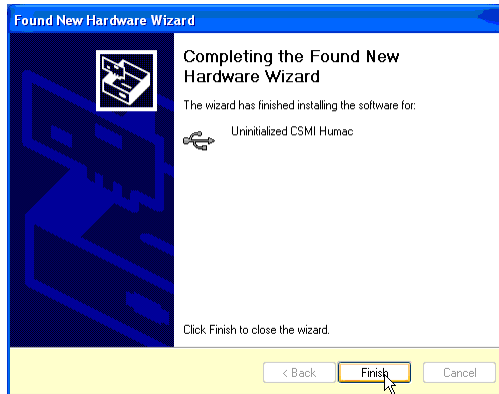
5.3. Windows will start the **Found New Hardware Wizard** for the **USB Device** click the **Next>** button.



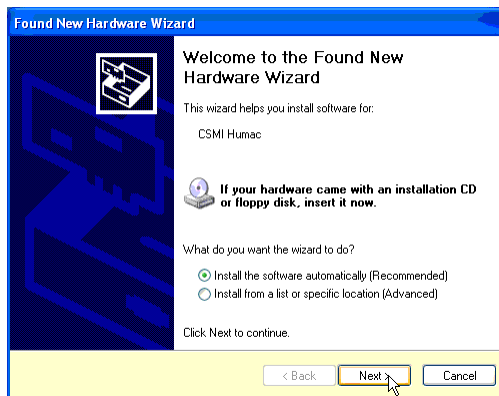
5.4. When the **Logo Testing** message appears, select click the **Continue Anyway** button.



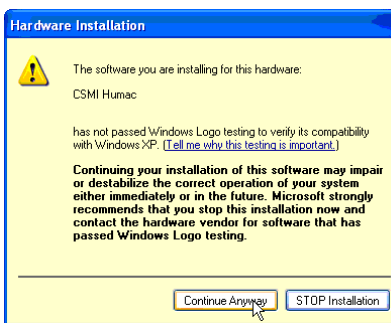
- 5.5. Windows will complete loading the USB Device drivers. When the process completes, click the **Finish** button.



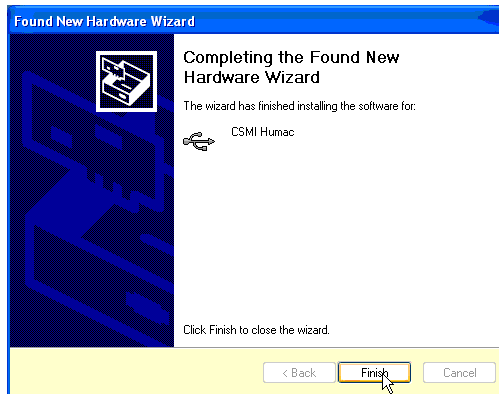
- 5.6. Windows will start the **Found New Hardware Wizard** for the **CSMI Humac**. Click the **Next>** button.



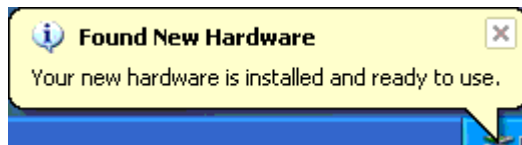
- 5.7. When the **Logo Testing** message appears, click the **Continue Anyway** button.



- 5.8. Windows will complete loading the **CSMI Humac** drivers. When the process completes, click the **Finish** button.

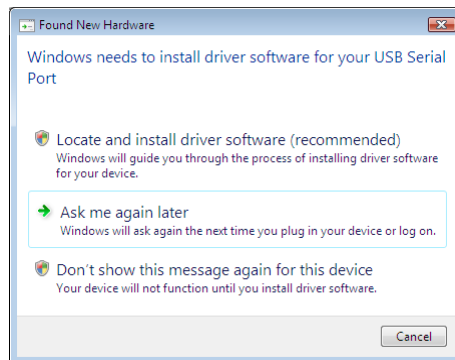


- 5.9. Windows will then display the **Found New Hardware** completion message. The message should report **"Your new hardware is installed and ready to use"**. Click the **X** to close the window.



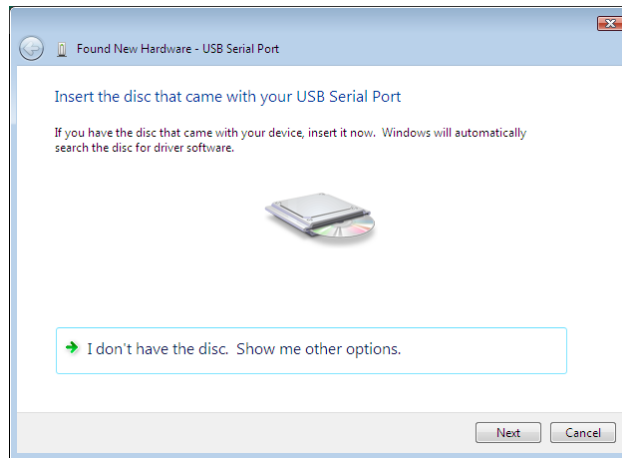
6. Installing the HUMAC COMMUSB Drivers – HUMAC360 and Weight Stack

- 6.1. With the PC turned on plug the HUMAC USB cable into the interface board.
- 6.2. Windows will start the **Found New Hardware Wizard** for the **USB Device** click the **Locate and install driver software (recommended)** option.

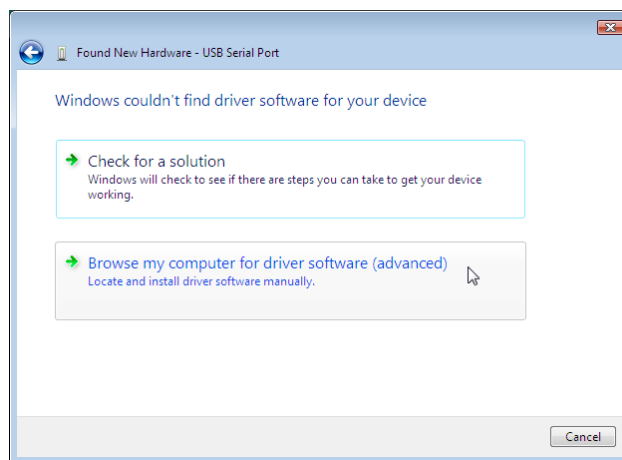


- 6.3. If Windows says it needs permission to continue, click the **OK** button.

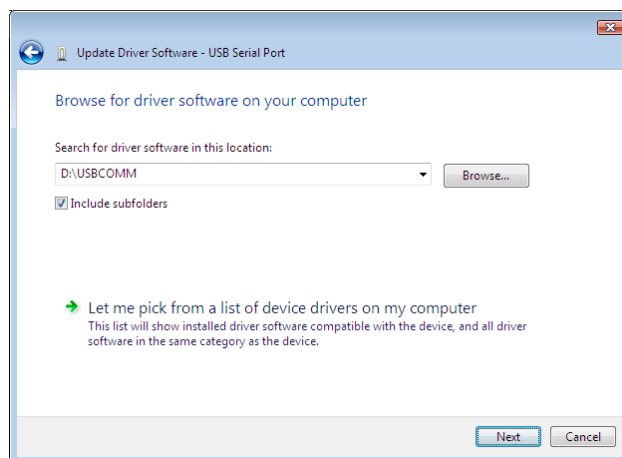
- 6.4. Windows will ask you to install the CD. Place the CD in the computer and click **I don't have the disk. Show me other options.**



- 6.5. Click the **Browse my computer for driver software** link.



- 6.6. Click the **Browse** button and select **D:\USBCOMM**. Click the **Next** button to continue.



6.7. Windows will load the driver and report success.

